



INTERNET PAN & TILT WIRELESS HD IP CAMERA



Quick Installation Guide
DN-16035

Thank you for purchasing this IP camera! Before you start to use this IP camera, please check the package contents. If anything is missing, please contact the dealer of purchase and return the package to claim for missing contents.

	Item Name	Quantity
1	Internet Camera	1
2	Antenna (Wireless model only)	2
3	Power Adapter	1
4	Ethernet Cable	1
5	Driver and User Manual CD-ROM	1
6	Accessories Pack	1

Minimum system requirement

Internet Explorer 6.0 SP1 or above Internet Web Browser

CPU: 2.0Ghz or above (2.4GHz plus processor with 1GB memory and a 256MB videocard is required for multiple camera viewing and recording in IP Surveillance)

Memory Size: 512MB

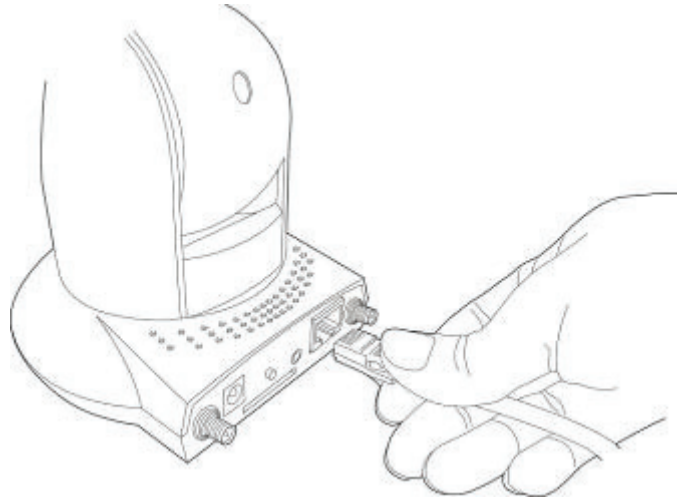
VGA card resolution: 1024 x 768 or above

Camera Installation

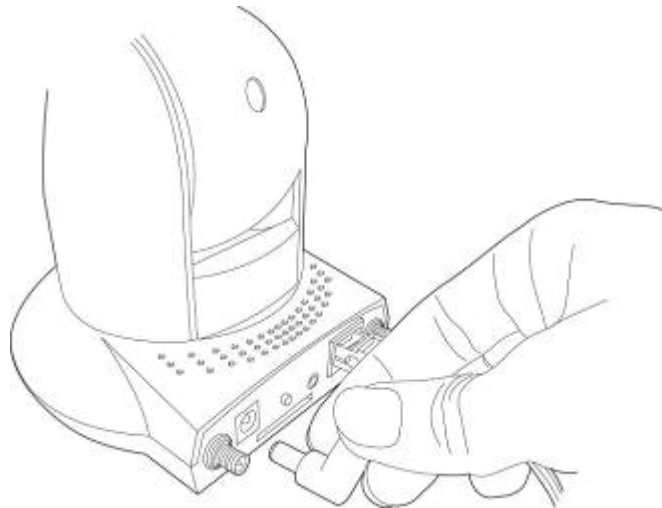
Please follow the following instructions to set the camera up:

Connect the Ethernet cable to your local area network, and connect the other end to the LAN jack of this IP camera.

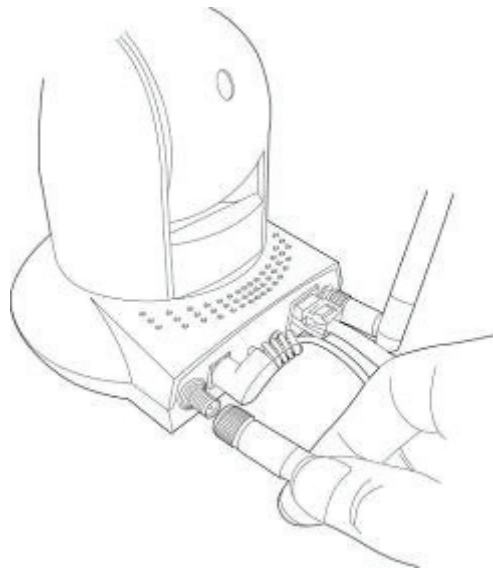
NOTE: You can skip this step if you plan to use wireless LAN only.



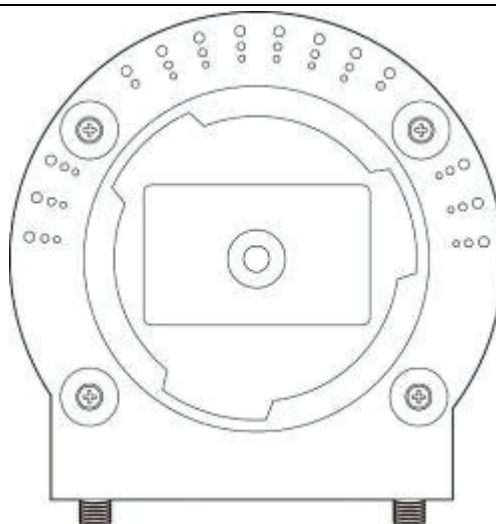
Plug the power adapter to wall socket, and connect the power connector to the power jack located at the bottom of the IP camera.



Connect the antennas to the antenna base (located at the back of the camera)

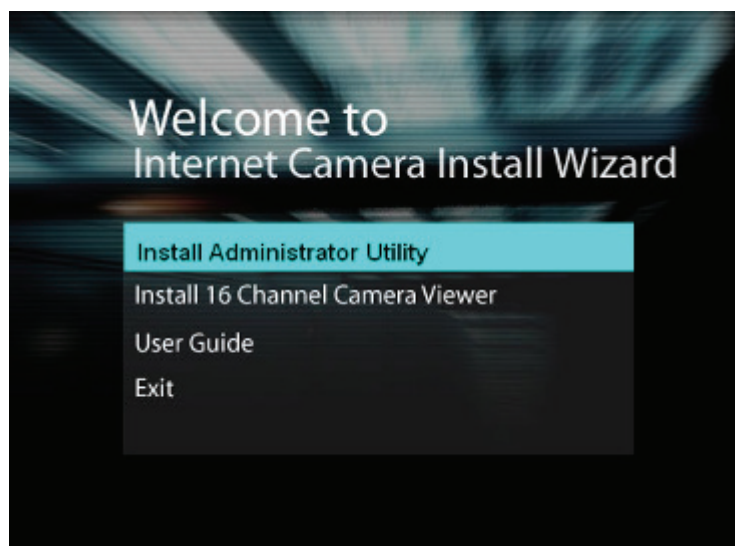


Place the camera at a secure place, and point the camera to the place you wish to monitor. If you wish to hang the camera on the ceiling or wall, please use the tripod connector (located at the bottom of the camera, as shown on the right) to secure the camera.

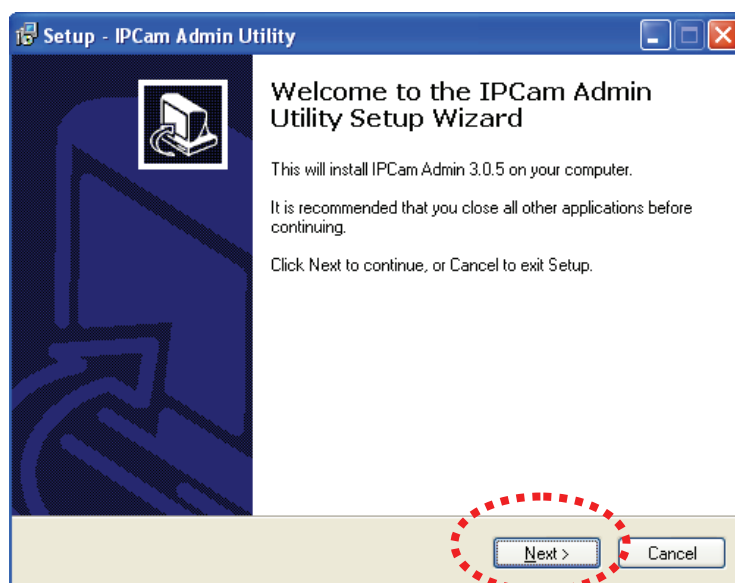


Put supplied CD-ROM into the CD/DVD drive of your computer, and click 'Install Administrator Utility'.

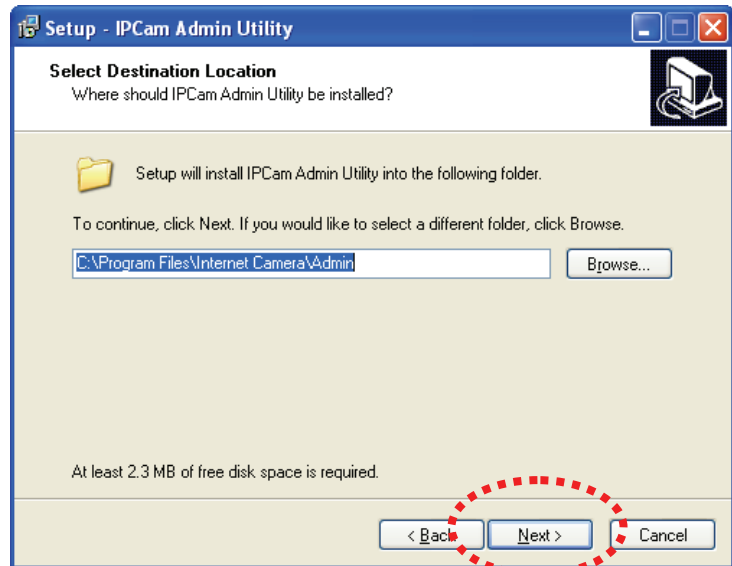
(If you didn't see this install wizard after you put the CD-ROM into CD/DVD drive, double-click CD/DVD drive icon, or double-click 'autorun.exe' on CD-ROM).



Click 'Next' to continue.

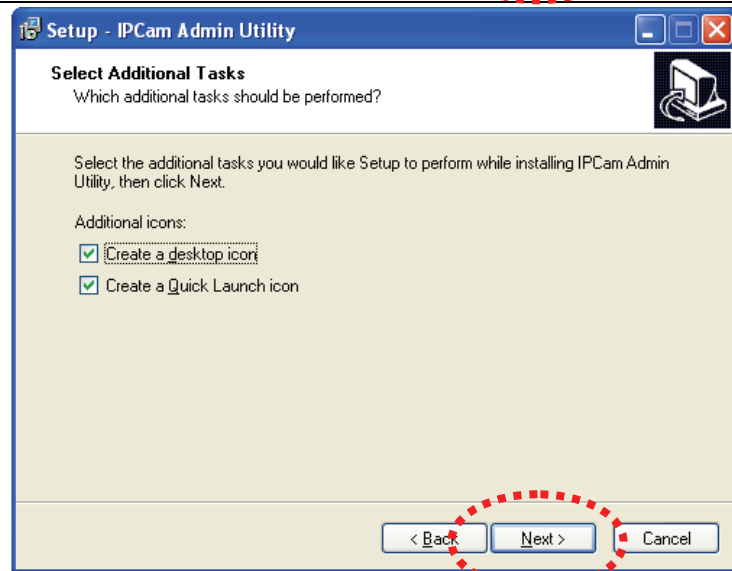


Click 'Next' to continue, or click 'Browse' to select another folder / drive to install admin utility.

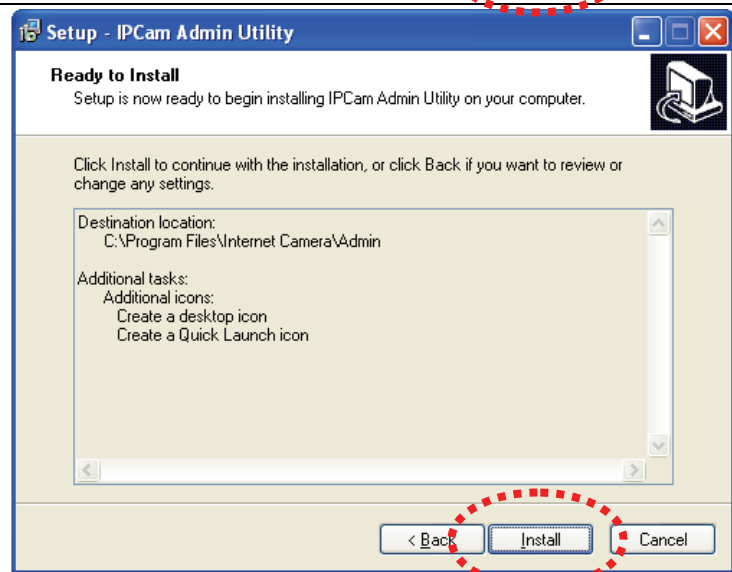


Click 'Next' to continue.

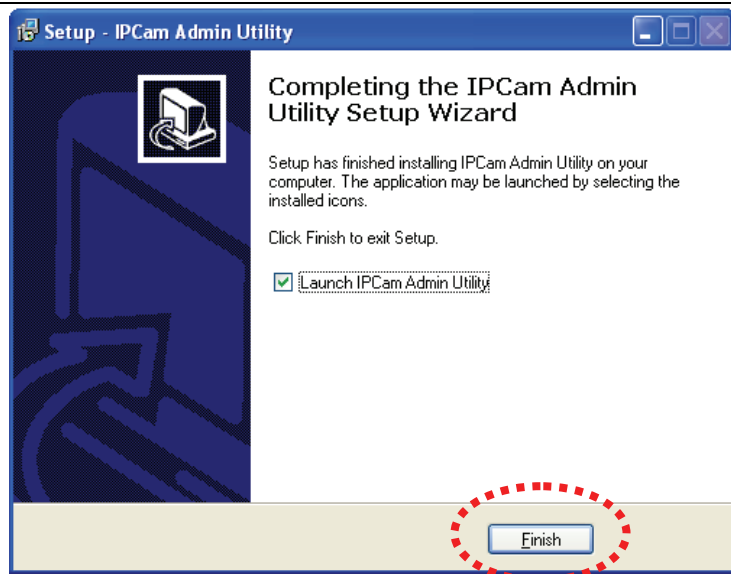
You can uncheck 'Create a desktop icon' and / or 'Create a Quick Launch icon' and corresponding item will not be created.



Click 'Install' to install admin utility.



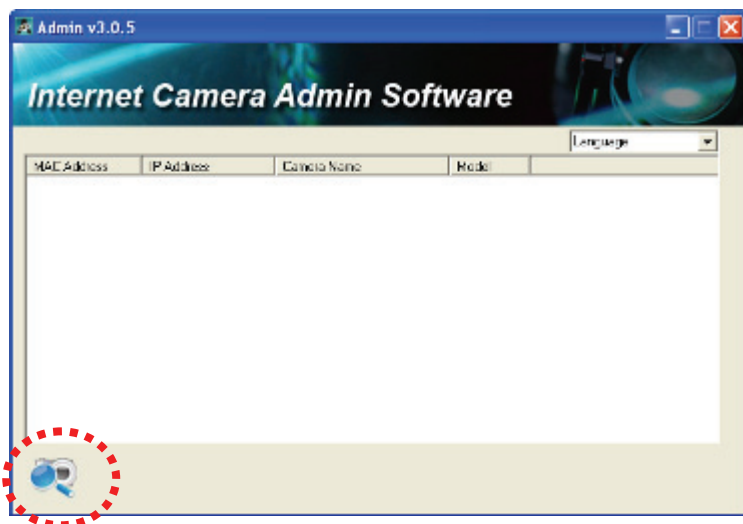
Click 'Finish' to finish installation and start admin utility.



Admin utility will search for all cameras available on your local network. You can click 'Search Camera' button to search for cameras on your network again.



Search Camera icon



When a (or more) camera is found, select it by mouse to highlight it, and then click 'Browse Camera via Web' button to launch web browser to connect to IP camera.

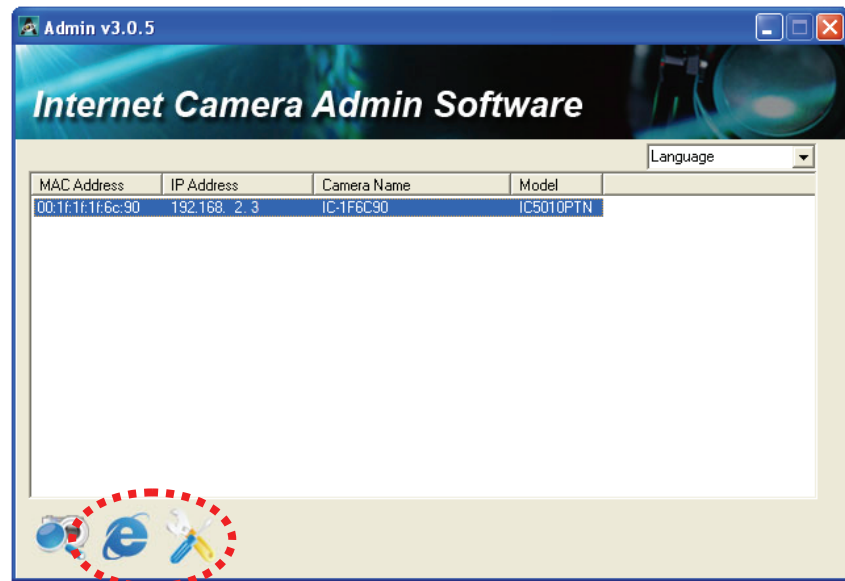
If the 'IP Address' of camera is '0.0.0.0', please click 'Configure Camera' button.



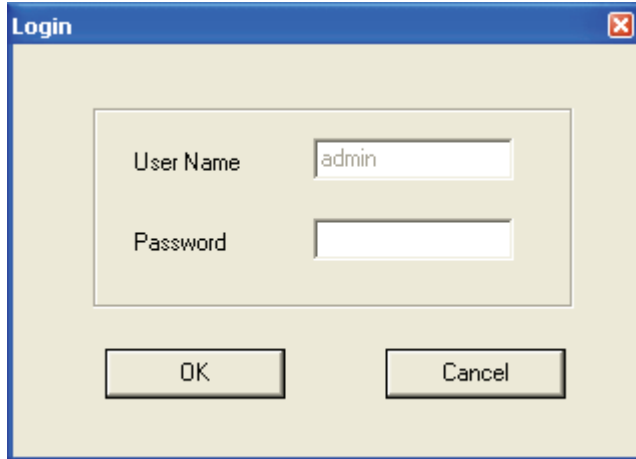
'Browse Camera via Web' icon



'Configure Camera' icon



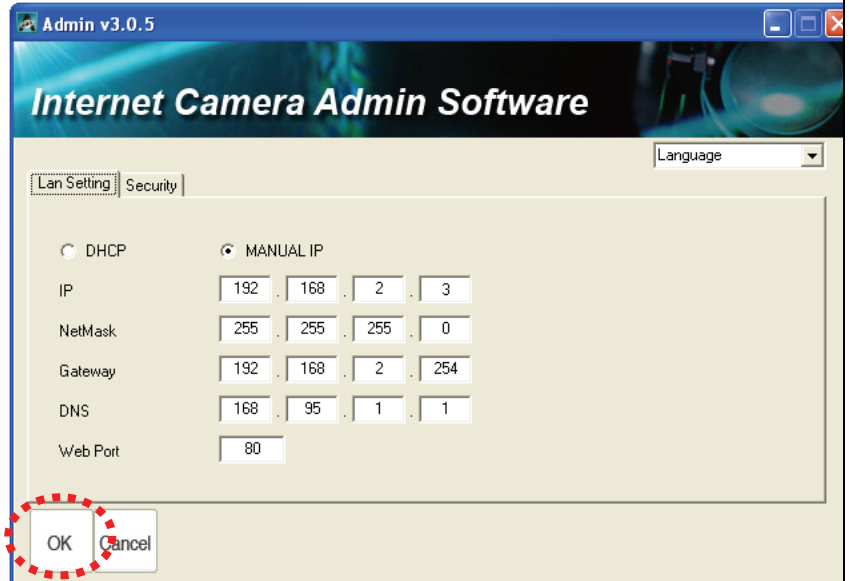
You'll be prompted to input username and password. Username is 'admin' (can not be changed), default password is '1234'.



A 'Login' dialog box with a blue title bar and a close button. It contains two input fields: 'User Name' with the text 'admin' and 'Password' which is empty. Below the fields are 'OK' and 'Cancel' buttons.

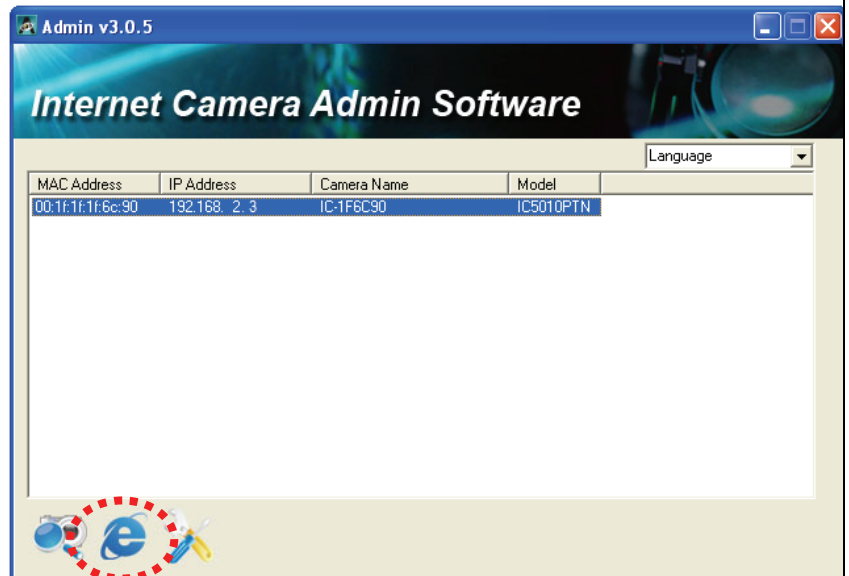
In this menu, you have to assign an IP address and its Netmask, Gateway, and DNS to be used by the camera, so your computer can connect to it. Please don't alter the setting of 'Web Port' unless you know what will be affected. Click 'OK' when finish.

If you don't know how to specify an IP address for your camera, please ask your network administrator or experienced technician.



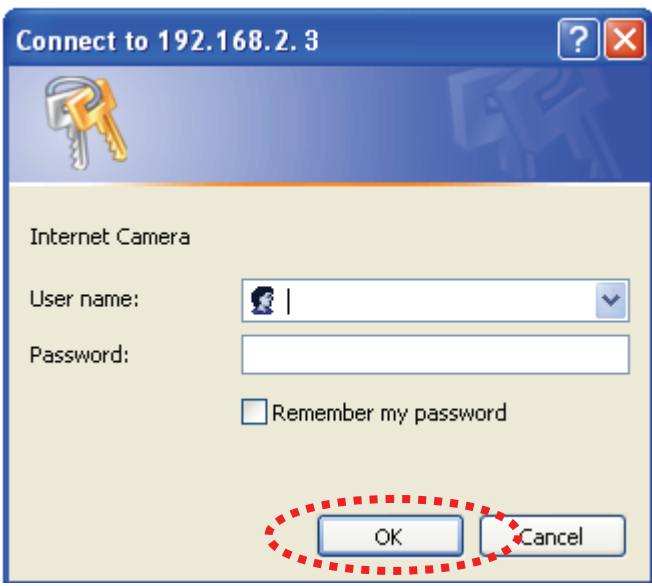
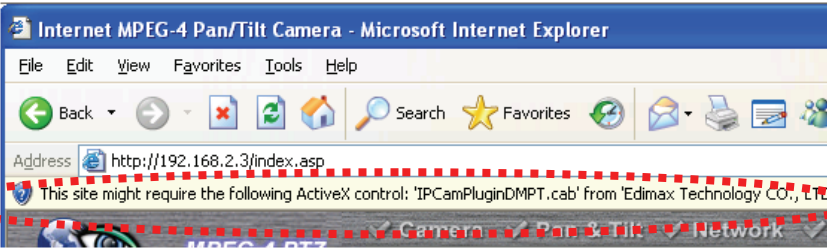
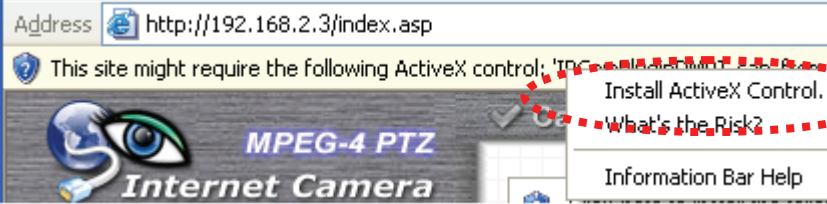
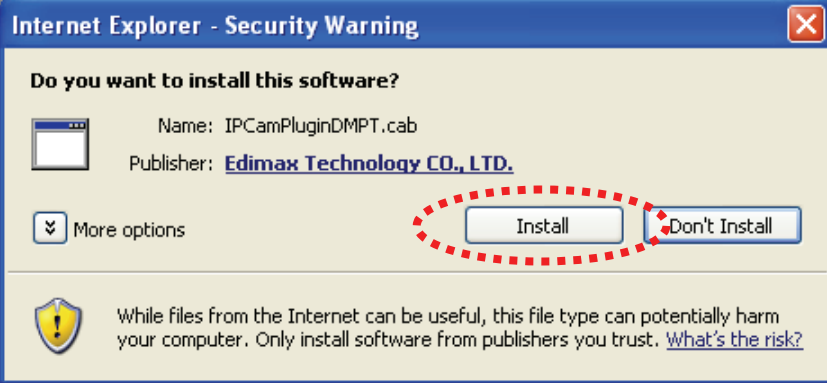
The 'Internet Camera Admin Software' interface, version 3.0.5, showing the 'Lan Setting' tab. The 'Security' sub-tab is active. The 'MANUAL IP' radio button is selected. The settings are: IP (192.168.2.3), NetMask (255.255.255.0), Gateway (192.168.2.254), DNS (168.95.1.1), and Web Port (80). The 'OK' button is circled in red.

Now you can use web browser to connect to IP camera by inputting IP camera's IP address in the web browser's address bar, or click 'Browse camera via Web' icon.

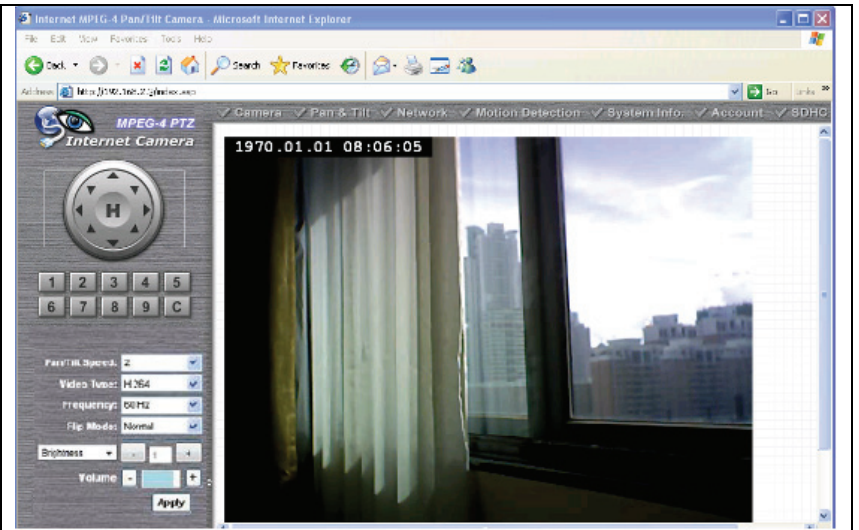


The 'Internet Camera Admin Software' interface, version 3.0.5, showing a table of camera devices. The 'Browse camera via Web' icon is circled in red.

MAC Address	IP Address	Camera Name	Model
00:1f:1f:6c:90	192.168.2.3	IC-1F6C90	IC5010PTN

<p>You'll be prompted to input user name and password, click 'OK' button when finish.</p> <p>If you can't see this login window, please go back to Admin Utility and click 'Configure Camera' icon to set the IP address of the camera before it can be connected.</p> <p>User name: admin Password: 1234</p>	
<p>After logged on, you should see the following messages appear at the top of Internet Explorer</p>	
<p>Right-click on the message, and click 'Install ActiveX Control...'</p>	
<p>When you see this message, click 'Install' to install required ActiveX control.</p>	

You should be able to see the images captured by the camera now. For advanced functions, please refer to instructions given in user manual (on supplied CD-ROM)



FC CE !

